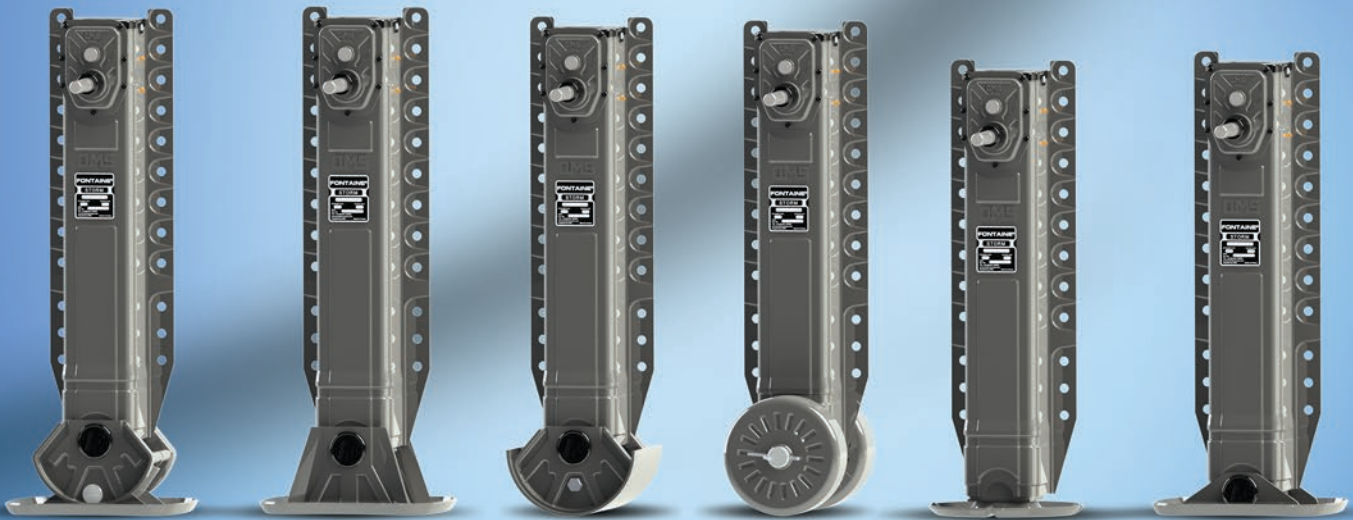




FONTAINE

STORM
Series

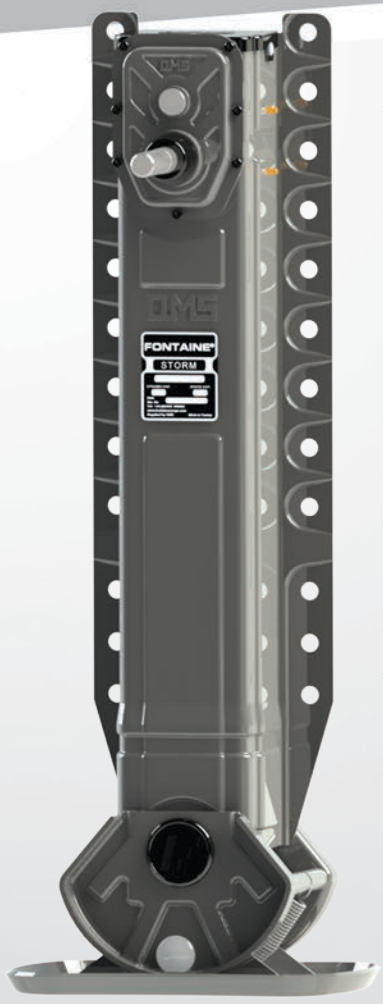


STORM SERIES CODE SYSTEM WORKS AS FOLLOWS**STM - 800 - S - 1600 - 450**

DEFINES STORM	STM
DEFINES TOTAL CLOSED LENGTH	800
DEFINES TYPE OF THE SHOE	S
DEFINES CONNECTION SHAFT DISTANCE	1600
DEFINES CRANK HANDLE LENGTH	450

FONTAINE STORM'S features are as follows;

- A monoblock made of 3mm St 52 material external tube comprises also mounting back plate
- Instead of welded sleeve, more esthetical more rigid and noncorrosive entire one piece external tube
- Vertical pressed strings increasing the strength
- 3 dimensions rigid mounting back plate allows variety of assembly.
- By special designed alloy gears, telescopic movements 1.03 mm/rev at low gear and 10 mm/rev at high gear.
- Ultimate paint quality is obtained with nanotechnologic primer before electrostatic powder coating.



STM S
COMPENSATE SHOE



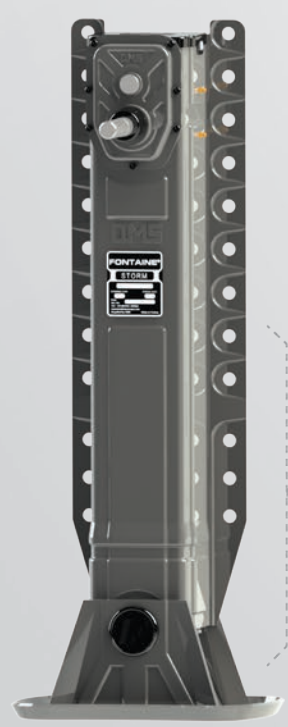
STM A
ROCKING SHOE



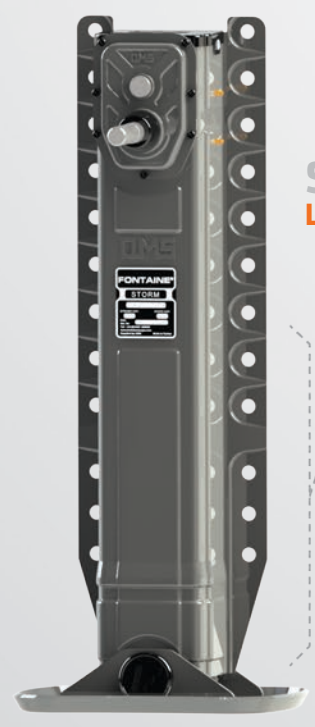
STM C
ARTICULATED SHOE



STM R
WHEEL SHOE

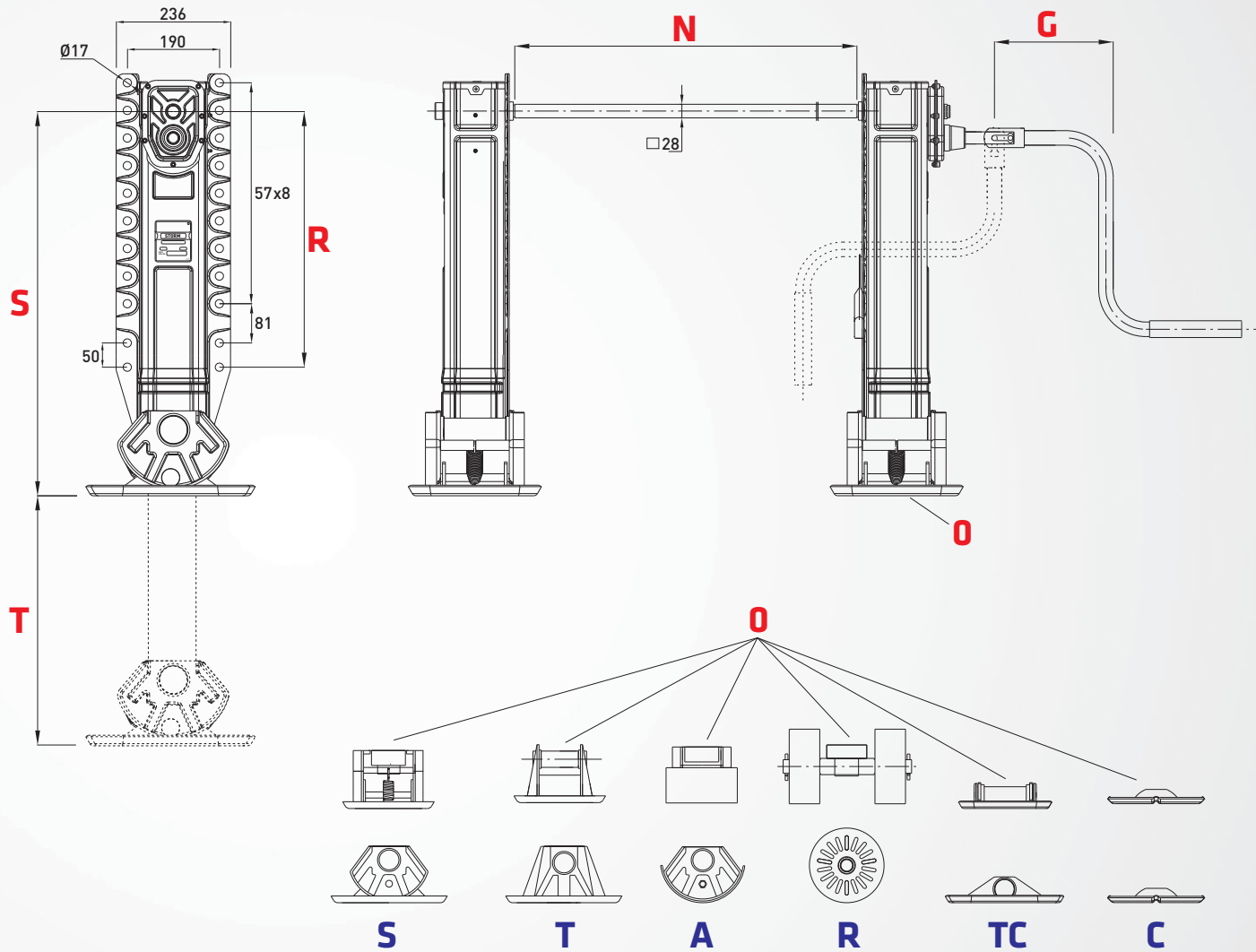


STM T
SAND SHOE



STM TC
LOWER SAND SHOE

STM STORM SERIES



Dynamic Lift Capacity		25 Ton	Low Gear			1,03 mm / rev					
Static Lift Capacity		50 Ton	High Gear			10,0 mm / rev					
Max Rotating Force		210 N	Sample Order Code			STM-800-S-1450-450					
S	T	R	O	N	G	WEIGHT					
						S	T	A	R	TC	C
850	510	580	S	1350	230	91,7	88,2	90	103	86,2	87,3
800	460	530	T	1450		87,8	84,2	86	99	82,2	83,3
750	410	480	TC	1470	350	83,9	80,3	82,1	95,1	78,2	79,4
700	360	430	A	1600	450	80	76	78,2	91,2	74,4	75,5
650	310	380	R	1700	480	75,8	72,2	74	87	70,2	71,3
			C	1790							

- Dimensions are given according to S shoe. For other applications please consult our R&D department.
 - The technical table contents may subject to changes.