

height mm	weight kg	94/20EC approval no.	Rating	
			D Value	Imposed load
138	122	e11 94/20*4932	150kN	20 tonne
148	120	e11 94/20*4902	150kN	20 tonne
161	122	e11 94/20*4903	150kN	20 tonne
185	124	e11 94/20*4904	150kN	20 tonne
210	129	e11 94/20*4905	150kN	20 tonne
230	137	e11 94/20*4906	150kN	20 tonne
257	140	e11 94/20*4907	150kN	20 tonne

All with DIN/ISO mounting pattern

Fontaine reserve the right to change specifications without notice.

## Handle options

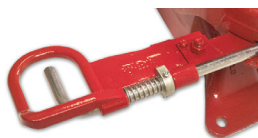
Fontaine fifthwheels can be user-specified with a range of handle options including extended and interlock models. Air operation is also available.



Standard handle



Extended handle option



Interlock handle option

## Mounting options

A wide range of mounting options is available, ensuring that Fontaine fifthwheels will fit any European chassis and suit any application.



DIN mount and mounting plate



Angle mount



Direct mount



Slider



MHT-Europe • Enterprise Way • Newton Road • Lowton • WA3 2AG • United Kingdom  
Tel: +44 (0) 1942 686000 • Fax: +44 (0) 1942 686006 • E-mail: sales@fontaineurope.com

# 3000

2" cast fifthwheel



CONNECT YOUR BUSINESS WITH FONTAINE®

## 3000 cast fifthwheel

## The TechLock® system



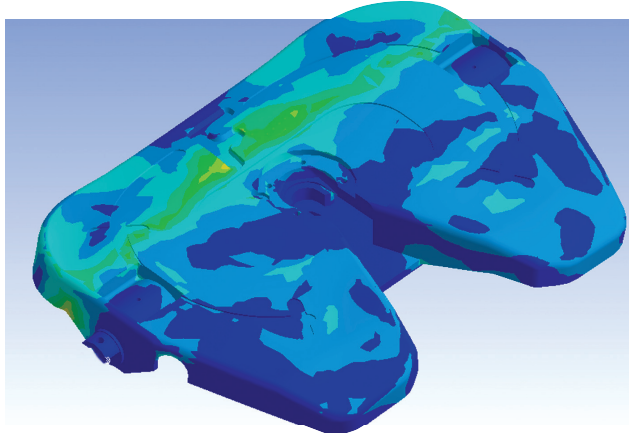
Global support



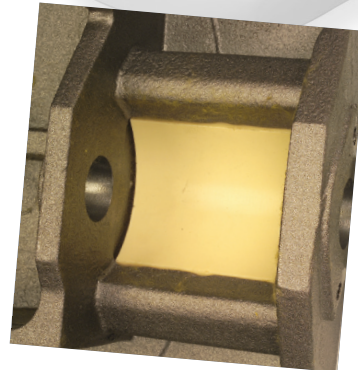
Patented TechLock® system with integral kingpin height sensor prevents false coupling



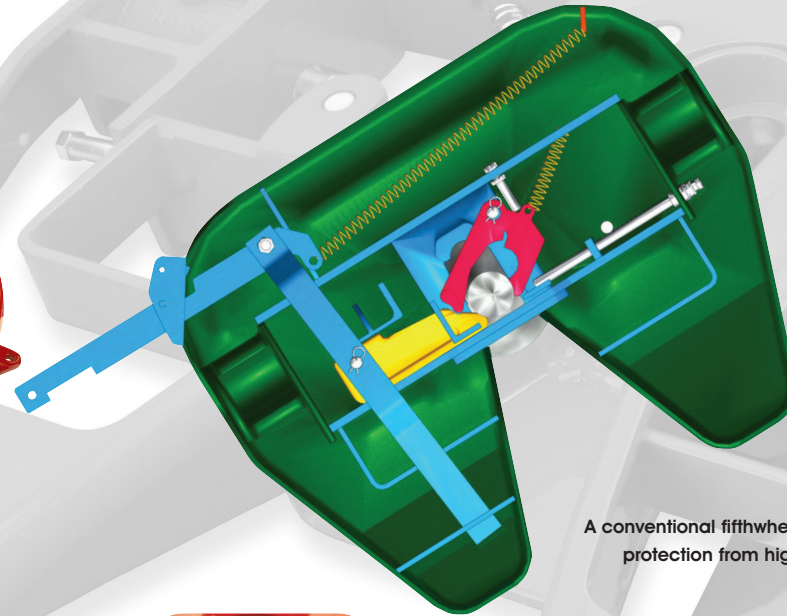
Low-maintenance version with replaceable top plates and bearing liners



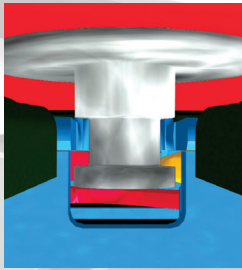
Designed with Finite Element Analysis for low weight and high strength



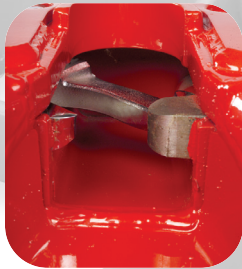
WARRANTY - Full two-year warranty on parts and labour for all on-road applications



Fontaine's patented kingpin height sensor is at the heart of the TechLock® system. The mechanism will only lock when the kingpin enters at the correct height



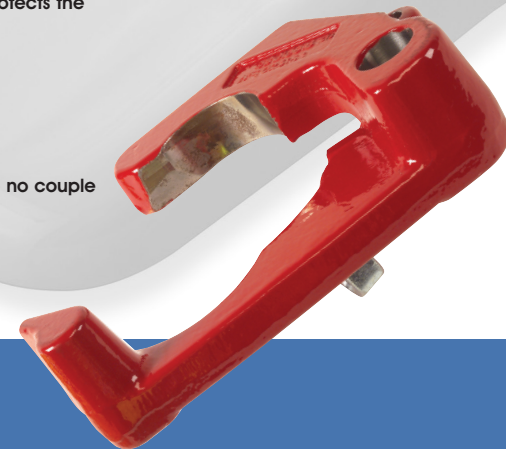
A conventional fifthwheel offers no protection from high coupling



The TechLock® system also protects the jaw from high coupling



No contact - no couple



[www.fifthwheel.com](http://www.fifthwheel.com)