

height mm	weight kg	94/20EC approval no.	Rating	
			D Value	Imposed load
138	115	e11 94/20*2683	150kN	20 tonne
148	113	e11 94/20*2684	150kN	20 tonne
161	115	e11 94/20*2685	150kN	20 tonne
185	117	e11 94/20*2686	150kN	20 tonne
210	122	e11 94/20*2687	150kN	20 tonne
230	130	e11 94/20*2688	150kN	20 tonne
257	133	e11 94/20*2689	150kN	20 tonne

All with DIN/ISO mounting pattern

Fontaine reserve the right to change specifications without notice.

Handle options

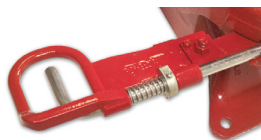
Fontaine fifthwheels can be user-specified with a range of handle options including extended and interlock models. Air operation is also available.



Standard handle



Extended handle option



Interlock handle option

Mounting options

A wide range of mounting options is available, ensuring that Fontaine fifthwheels will fit any European chassis and suit any application.



DIN mount and mounting plate



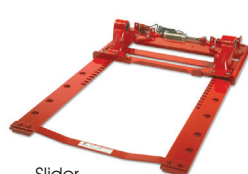
Angle mount



Direct mount



Slider



MHT-Europe • Enterprise Way • Newton Road • Lorton • WA3 2AG • United Kingdom
Tel: +44 (0) 1942 686000 • Fax: +44 (0) 1942 686006 • E-mail: sales@fontaineurope.com

150SP

2" pressed steel fifthwheel



CONNECT YOUR BUSINESS WITH FONTAINE®

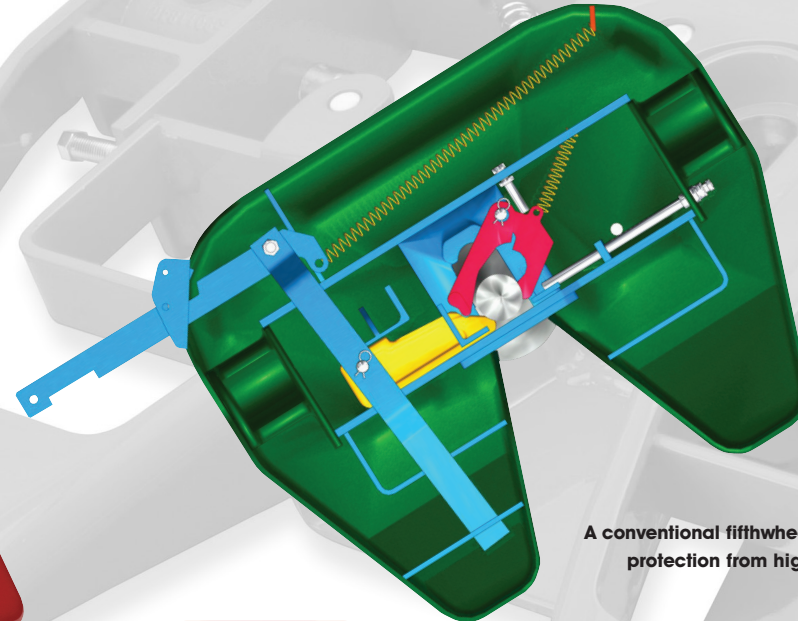
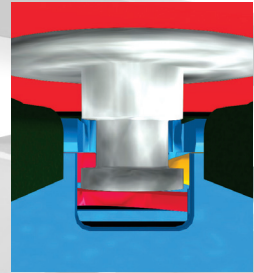
150SP fifthwheel

The TechLock® system

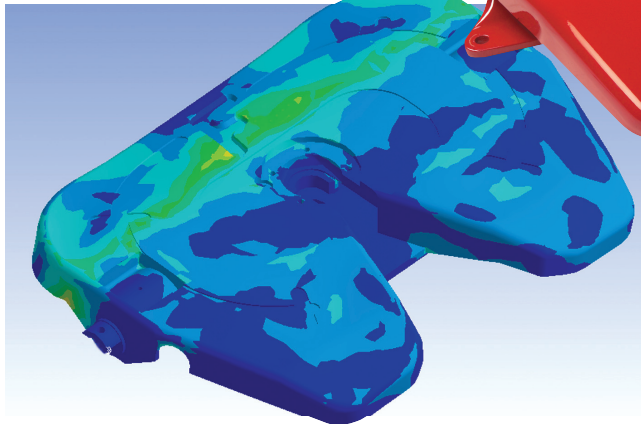


Global support

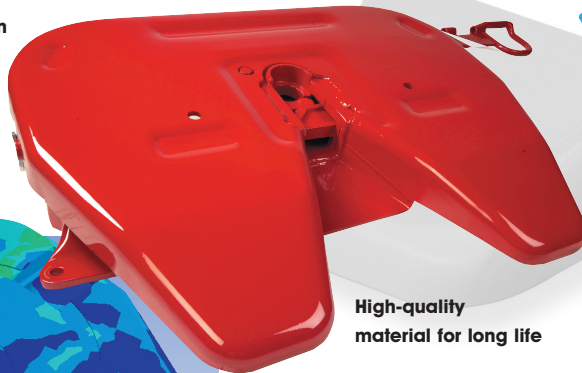
Fontaine's patented kingpin height sensor is at the heart of the TechLock® system. The mechanism will only lock when the kingpin enters at the correct height



Patented TechLock® system with integral kingpin height sensor prevents false coupling

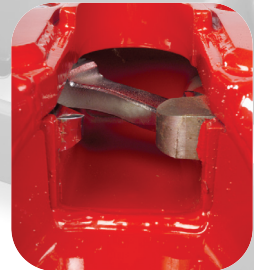


Designed with Finite Element Analysis for low weight and high strength



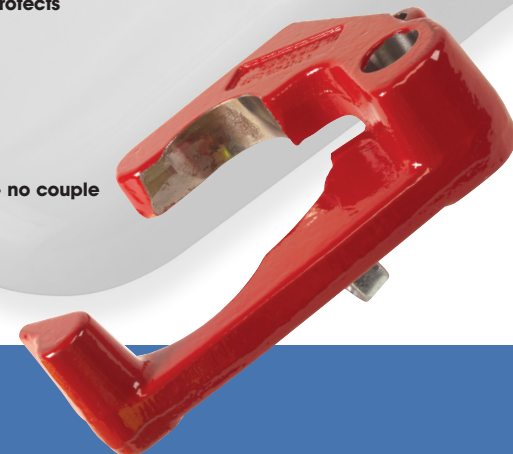
High-quality material for long life

A conventional fifthwheel offers no protection from high coupling



The TechLock® system also protects the jaw from high coupling

No contact - no couple



WARRANTY - Full two-year warranty on parts and labour for all on-road applications